

We provide solutions.
Whatever your requirements.



Kaschke Components
GmbH

We provide solutions.

Modern technology opens up lots of great solutions. Many of them are ours.



Contactless energy transfer technology is not just used in electrical toothbrushes; in Braunschweig it is also used in electric buses, albeit in a larger format. The power chokes used for these systems are subject to stringent requirements: they must be highly effective, compact, water-cooled, low noise and offer high flux density. This was a challenge well within the capabilities of Kaschke Components.

Since the company was founded in 1955, we have continued to expand our development and manufacturing expertise and provide our customers with tailored solutions, offering optimal performance in line with the 'design to cost' principle.

These solutions are developed at our headquarters in Göttingen and manufactured at our production sites in Tunisia and Küllstedt in Thuringia.



Our sustainably-manufactured, high-performance inductive components and soft magnetic materials play a vital role in a diverse range of applications from hearing aids to power supplies for high-performance lasers.

From industrial electronics to automotive, medical and railway technology, customers benefit from our design expertise, years of manufacturing experience, high quality standards and 'just in time' logistics – all supplied in keeping with our slogan 'We provide solutions'.





Kaschke components: Your company is probably using them too.



Inductive components are key parts in a wide variety of applications throughout the electronics market. Thanks to numerous innovations, it has been possible to, for example, significantly increase power supply efficiency in recent years. At the same time, the weight and size of components have been reduced and there is now greater freedom of design.

Improved performance inevitably results in end products with much longer service lives. With its design expertise and creativity, Kaschke is able to provide solutions which help you keep a step ahead of the competition. In line with our risk spreading policy, no single business segment accounts for more than 30% of sales.



Alternative energies



Propulsion technology



Automotive electronics



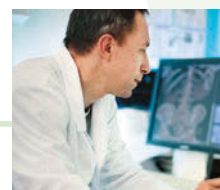
Railway technology



Industrial electronics



Sensor technology



Medical engineering



Kaschke supplies components for a wide variety of business segments. Make the most of our interdisciplinary expertise and experience.



Consumer goods



Lighting technology



From cars to toothbrushes: We wind coils for all applications.

In supplying an A to Z of inductive components, we have set ourselves the task of providing you with innovative solutions to meet even the most demanding of challenges.

Kaschke produces a full range of components from miniature chokes for medical devices to high-performance boost chokes for inverters used in contactless energy transfer systems of up to 240 KW.

Kaschke uses a diverse range of cutting-edge production techniques to produce its extensive range of products.



Ultra-fine wire winding



Toroid winding



Linear winding



Hand winding



Foil winding



Edge wire winding

What can we do for you?

We have many years of experience developing, producing and delivering customized inductive components of all sizes on schedule.
Put us to the test!

From ultra-fine wire and Litz wire to edge wire winding and foil winding, our system and tool manufacturing facilities enable us to allocate machines, appliances, soldering devices and measuring equipment flexibly and efficiently, ensuring maximum process stability in the production of each and every product.



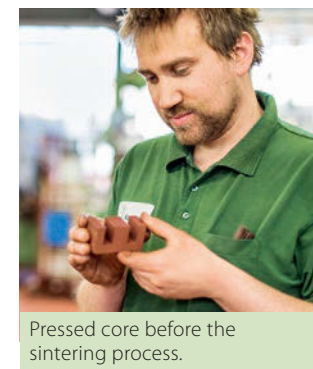


Effective yet invisible: Our ferrites have got what it takes.



We have been supplying our customers with standard and special solutions in the area of soft magnetic materials and core geometries for over 50 years.

At a time when mass production of ferrites has moved to Asia, Kaschke Components has focused on innovation and developing expertise in partnership with local universities, colleges and research institutes.



Pressed core before the sintering process.



Sintering furnace

Despite strict environmental regulations and high energy costs, our Göttingen site in the heart of Germany offers customers a high degree of flexibility, rapid response times and exceptional reliability thanks to its location.

Ferrites

- Internal material development
- Internal product design
- Internal powder production using over 25 materials

Material lines:

- NiZn ferrite – capacity 100 t/a
- MnZn ferrite – capacity 700 t/a
- Internal tool and system manufacturing

Our key focus areas

- High volume ferrites with high flux density and limited losses up to 100 kHz
- Ring cores up to R102 with very good insertion losses and high Q-factor
- Rod cores for transmitter/receiver coils in the 20 kHz – 40 MHz range
- Pot cores for proximity switchers with high Q-factor
- Impeder cores for inductive welding
- Customized core shapes
- Medium and small lot sizes, and single item production on request
- Complex core shapes using optimised grinding technology on CNC-controlled systems
- Large core shapes using joining and bonding technology

In addition to the standardized core shapes stipulated by the IEC, we offer a wide range of special core shapes.



Our Orient Express: From Tunis to Göttingen in under 72 hours.



The production of inductive components remains an extremely labor and time-intensive process. Due to the special, often manual or semi-automated, manufacturing techniques used to produce them, these components are critical to the reliability of an assembly.

Kaschke has been producing them for more than 35 years at two sites in Tunisia. The high level of education and training in this emerging industrial nation provides ideal conditions for producing premium products competitively in a location close to Europe.

8010 Menzel Bou Zelfa

Rue Mongi Slim

- 600 employees working in two shifts
- Manufacture of linear and edge wire winding products
- Approximately 80 million inductive components per year
- German-trained Tunisian engineers
- Plant language: German

1100 Zaghouan

Zone Industrielle

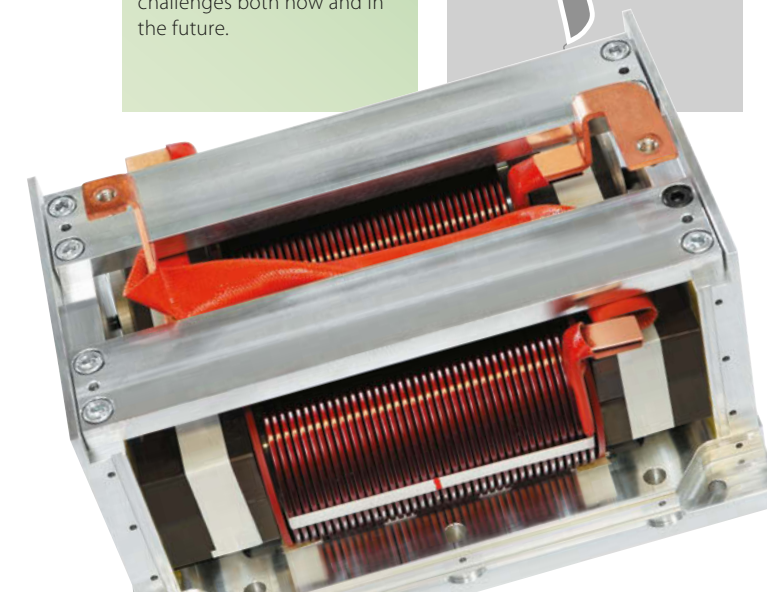
- 900 employees working in two shifts
- Manufacture of linear and ring winding products
- Approximately 70 million inductive components per year
- German-trained Tunisian engineers
- Plant language: German



Scan the QR code
for a more detailed map.



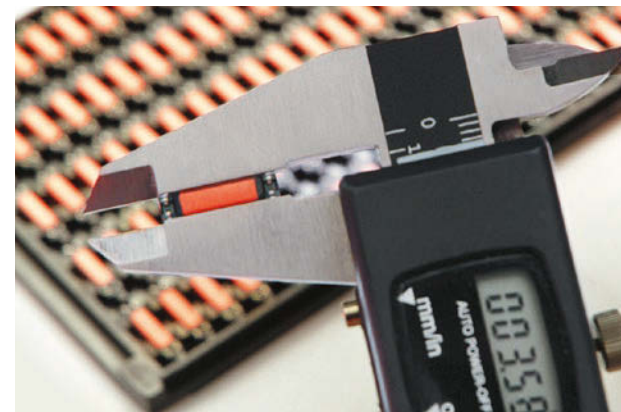
At a time when our customers' logistical requirements are growing, transport costs are gaining significance and a sensitive approach to resources is the norm, Tunisia offers ideal conditions for meeting these challenges both now and in the future.





Everything about our components is just right. Especially the quality.

Product quality invariably results from an optimal combination of extensive design expertise, high process stability, sound product engineering and an intelligent monitoring system during manufacturing.



Our network of qualified suppliers offering a diverse range of input materials ensures a sound supply chain and guarantees exceptional security of supply, even in unpredictable circumstances.

- All Kaschke plants are ISO 9001:2008 certified – the Küllstedt plant is ISO TS 16949:2009 certified.
- The Kaschke manufacturing facilities in Tunisia have been subject to VDE production control since 1990.
- Our Göttingen site has been certified as an Accredited Economic Operator (AEO) since 2009.

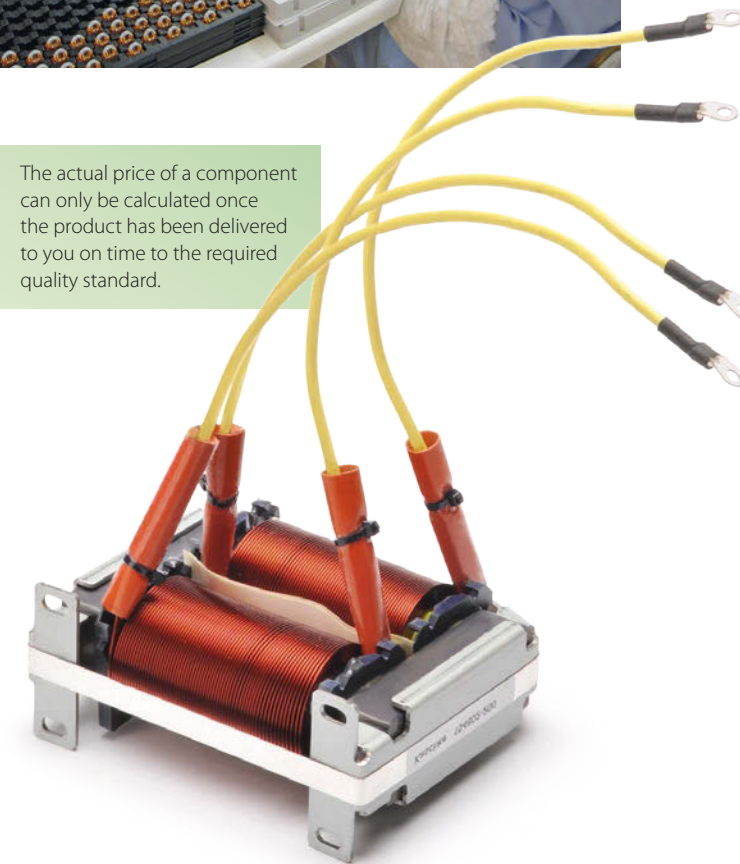


Details of our current certifications can be found here.

Our certifications:

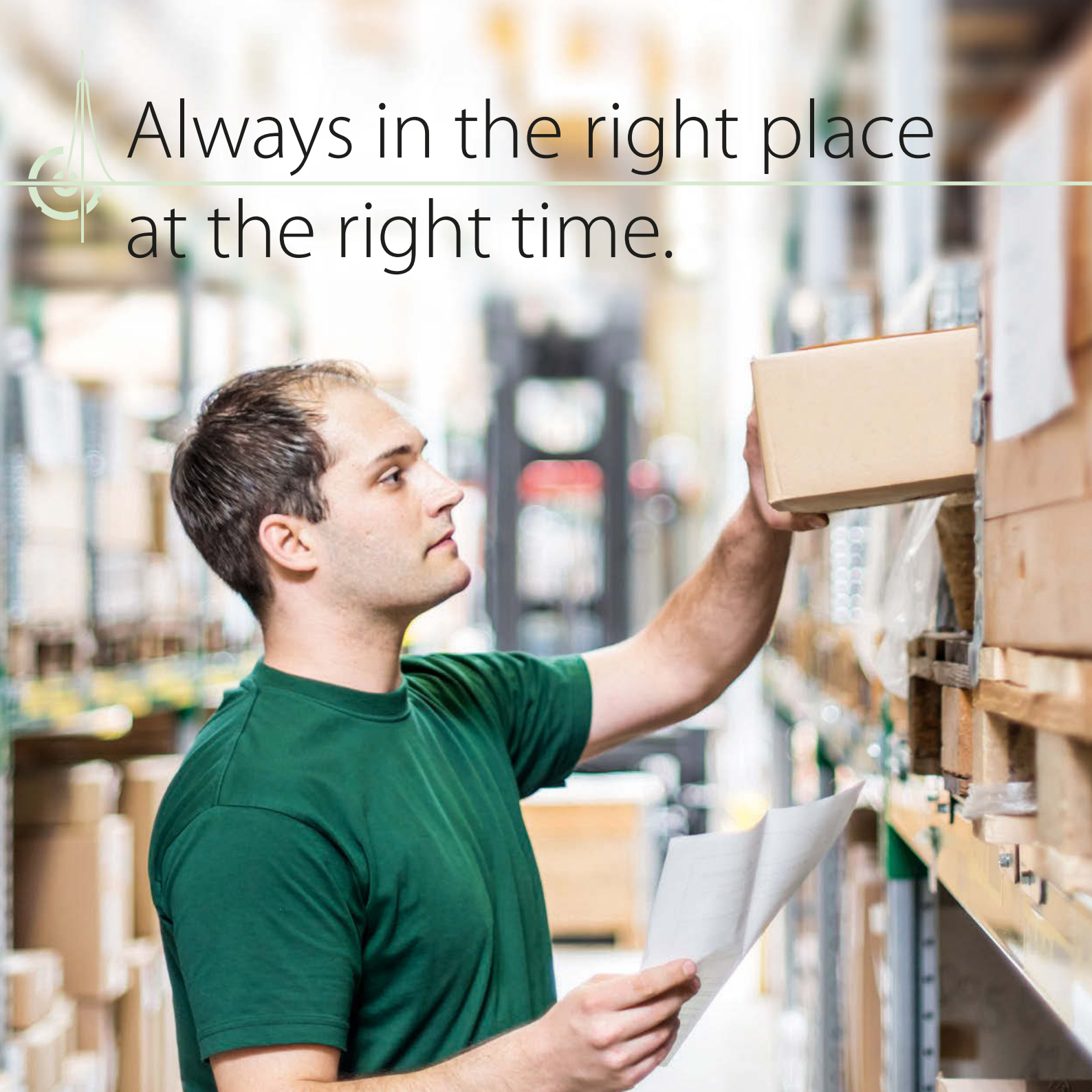


The actual price of a component can only be calculated once the product has been delivered to you on time to the required quality standard.





Always in the right place at the right time.



An efficient logistical solution starts with the design phase, during which input materials for coil products are chosen. We focus on the availability of the components used as well as their cost.



Consequently, the Kaschke development and materials management divisions work very closely together. They consider short delivery times and a highly flexible response to fluctuating demand to be just as important as optimal product performance.



Goods handling in our logistics center

Moreover, we have at least two qualified suppliers for all parts of the BOM which ensures continuity of supply. Kaschke considers itself to be a partner to its customers and suppliers and is able to support the following logistics systems where required:

- Kanban
- Just in time
- WebEDI
- Custodian warehouse

We rise to the challenges of your logistical requirements and ensure that your customers receive the level of service they deserve.





You can find your
contact person here.