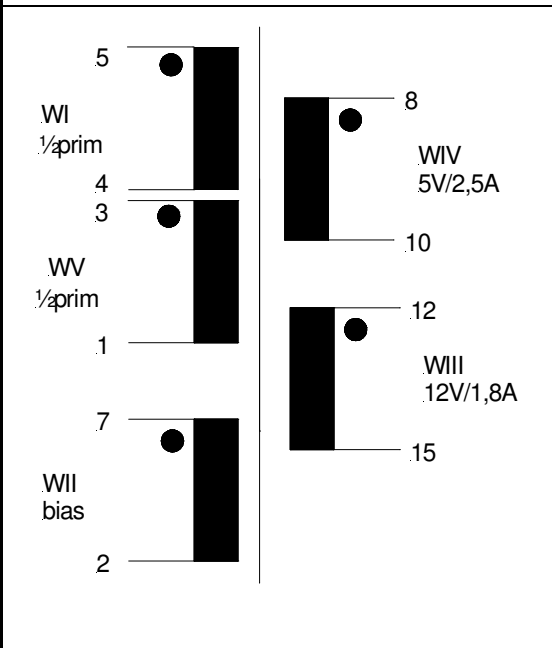
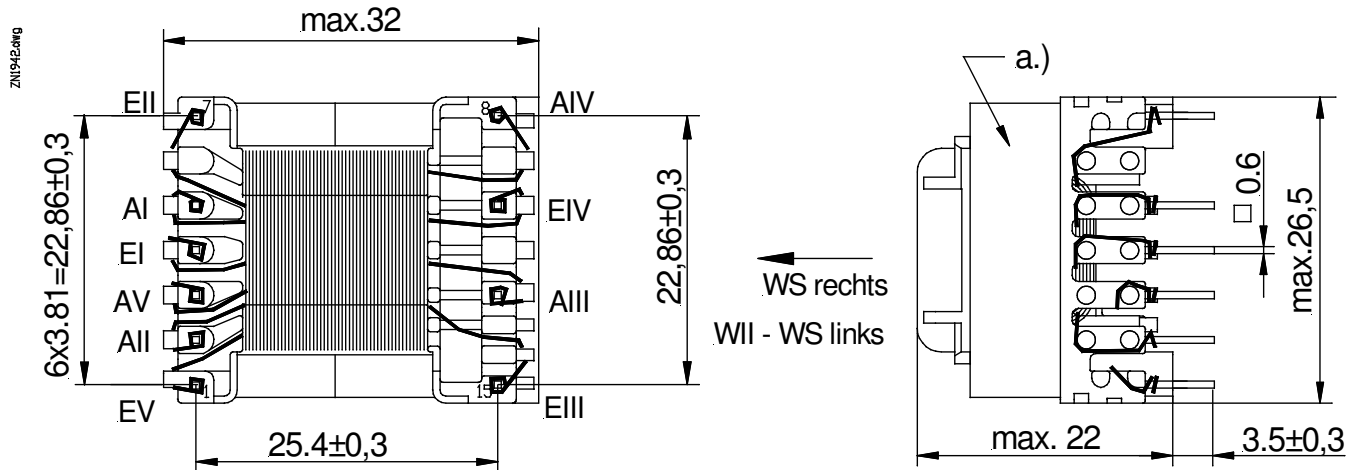


Technical Data Sheet

Customer :

Part designation :
SP-E 25/7

Customer part number :
SKOP245-5-12-35



Core / material	E25/7 / K2006 or equiv.
Nominal inductance	LI+LV=504μH±10%
Ratio of transformation	32:7:7:3:32
Dielectric strength (50Hz/1s)	WI/WII/WV - WIII/WIV = 3,75kVeff
Maximum transmission power	34W
Working frequency	132kHz
Operating temperature	-25°C - +125°C
Storage temperature	-25°C - +85°C

a.) marking

Measuring device of L:		Measuring conditions of L:				
Measurement	Unit	No. 1	No. 2	No. 3	No. 4	No. 5

Kaschke Components GmbH Göttingen	Person responsible :	Date:	Design regulation no.:
	Häpe	09.06.2010	095954-001

Please give us your written release and certified herewith the confirmation of the validation in the application !!!

Date	Signature
------	-----------